

# State of Wyoming Corner Record

(In compliance with the **CORNER REESTABLISHMENT AND FILING ACT**, Wyoming Statutes, 1977 Section 36-11-101, et. seq., and the Rules and Regulations of the Board of Professional Engineers and Professional Land Surveyors)

Reverse side of this form may be used if more space is needed.

Record of original survey and citation of source of historical information (if corner is lost or obliterated). Description of corner monumentation evidence found and/or monument and accessories established to perpetuate the location of this corner. Sketch of relative location of monument, accessories, and reference points with course and distance to adjacent corner(s) (if determined in this survey). Method and rationale for reestablishment of lost or obliterated corner.

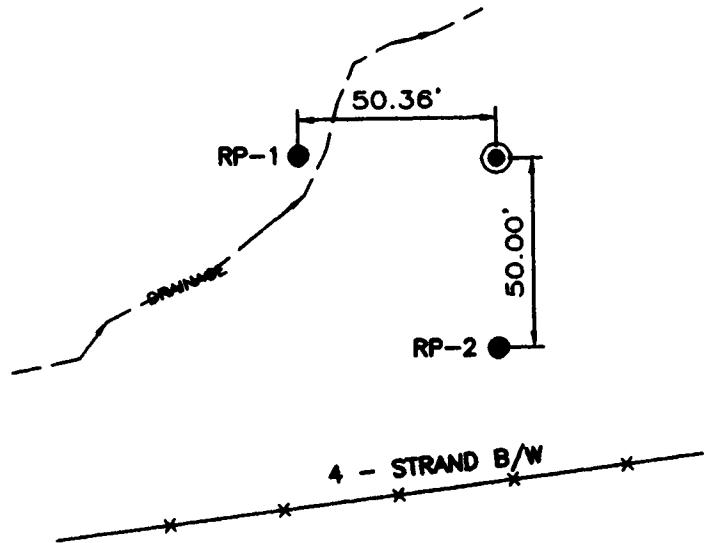
FOUND: NONE

GLO RECORD: NONE

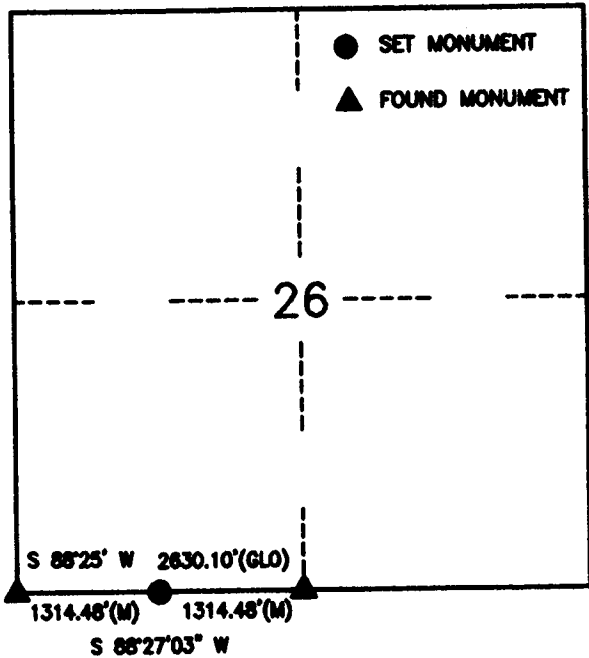
SET: BY SINGLE PROPORTION, 5/8" DIA.  
BY 24" LONG REBAR WITH 2" ALUMINUM  
CAP STAMPED.

REFERENCES: 2 - 5/8" DIA. BY 24" LONG REBAR WITH  
1 1/2" ALUMINUM CAP STAMPED RP-1,  
RP-2, PLS 566.

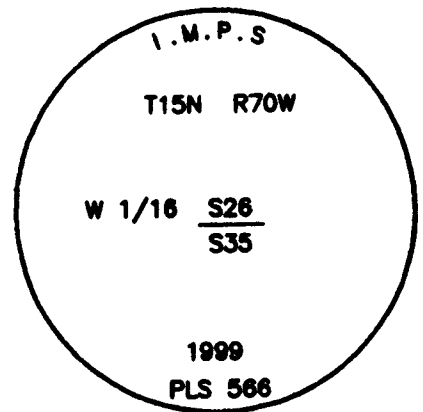
## Reference Locations



## Monument Location



## Monument Inscription



Date of Field Work: 2/16/99

Office Reference: 3174

## Cross Index Plat

	1	2	3	4	5	6	7	8	9	10	11	12	13	14	15	16	17	18	19	20	21	22	23	24	25	
A																										
B																										
C		6	5	4	3	2	1																			
D																										
E																										
F																										
G		7	8	9	10	11	12																			
H																										
J																										
K																										
L		18	17	16	15	14	13																			
M																										
N																										
O																										
P		19	20	21	22	23	24																			
Q																										
R																										
S																										
T		30	29	28	27	26	25																			
U																										
V																										
W																										
X		31	32	33	34	35	36																			
Y																										
Z																										
	1	2	3	4	5	6	7	8	9	10	11	12	13	14	15	16	17	18	19	20	21	22	23	24	25	

Firm/Agency, Address

INTERMOUNTAIN  
PROFESSIONAL SERVICES  
5801 OSAGE AVENUE  
CHEYENNE, WYOMING 82009  
Ph: (307) 632-3138  
Fax: (307) 632-3194

This corner record was prepared by me or under my direction and supervision.

SEAL & SIGNATURE



RECORDED 3/31/2000 AT 10:04 AM REC# 271381 BK# 1550 PG# 621  
DEBRA K. LATHROP, CLERK OF LARAMIE COUNTY, WY PAGE 1 OF 1

Corner Name WEST 1/16 Section 28, T 15 N, R 70 W, 6th P.M.  
County: LARAMIE Wyoming

Cross-Index No.: V-18